

Iseo Serrature s.p.a.
Via San Girolamo 13
25055 Pisogne (BS)
ITALY
Tel. + 39 0364 8821
Fax + 39 0364 882263
iseo@iseo.eu

Fiam s.r.l.
Via Don Fassola 4
22069 Rovellasca (CO)
ITALY
Tel. + 39 02 96740420
Fax + 39 02 96740309
info.fiam@iseo.eu

Cerraduras Iseo Ibérica S.L.
Pol. Ind. Las Marinas
Nave No. 2/4/6
28064 Ajalvir - Madrid
SPAIN
Tel. + 34 91 8843200
Fax + 34 91 8843003
iseo@iseoiberica.es

Iseo France s.a.s.
1111, rue du Maréchal Juin
BP 560 Vaux le Pénit
77006 Melun Cédex FRANCE
Tel. + 33 1 64835858
Fax + 33 1 64879685
city.iseofrance@iseo.eu

Levasseur Systèmes s.a.
7 rue des Coutures
BP 35 Torcy
77201 Marne La Vallée
Cedex 1 FRANCE
Tel. +33 1 60953910
Fax +33 1 60953935
contact@levasseur-vass.com

Iseo Asia Ltd. Hong Kong
Correspondence Address:
17-19 Jalan 22,
47100 Puchong, Selangor DE
MALAYSIA
Tel. + 603 8075 3331
Fax + 603 8075 9333
info@iseoasia.com

Iseo Deutschland GmbH
Wiesestraße 190
07548 Gera
GERMANY
Tel. + 49 365 73620
Fax + 49 365 7362151
iseo.gera@iseo.eu

Iseo Middle East F.Z.E.
P.O. Box 61390
Jebel Ali, DUBAI
United Arab Emirates
Tel. + 9 714 2957220
Fax + 9 714 2957166
iseome@emirates.net.ae

Iseo Beijing
Arch. Hardware Co.Ltd.
Room 2904 Bldg 11 Jianwai Soho 39 East 3RD
Ring Road - Chaoyang District - Beijing
CHINA 100021
Tel. + 861058698079
Fax + 861058698079
admin.cn@iseoasia.com

Cod. 000731 - Print 12/2008

Multiblindo Easy

LIVING &
LEAVING

Choose your
security
and comfort.

Multiblindo Easy

LIVING & LEAVING

It is a Multiblindo by all means: same sizes and dimensions, same security level just like the classical Multiblindo ISEO.

But it is an all-new Multiblindo, conceived with **3 different functions to be set by the end user:**

- deadbolts and latchbolt automatic locking
- locking by latchbolt only
- setting without locking

To use **Multiblindo Easy** you need to apply an external fixed knob or a pull handle; as matter of fact, a "classic handle" would unlock the door (emergency function).

Multiblindo Easy is so safe that it manages security by itself.



Multiblindo Easy

LIVING & LEAVING



EASY LIVING

Multiblindo Easy really allows for an easy living, in full comfort and security. Security in your house is guaranteed only as an ISEO Multiblindo can do.

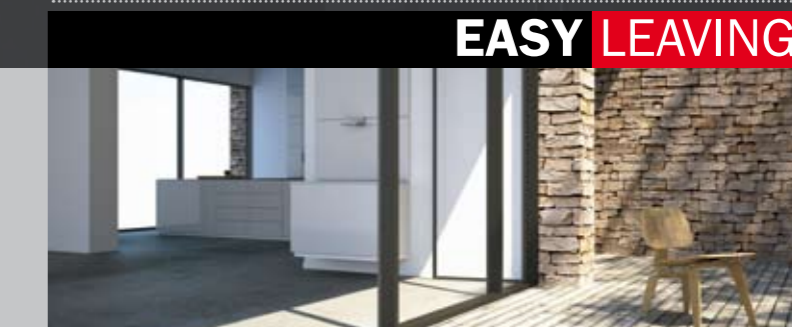
Multiblindo Easy automatically locks with latchbolt and deadbolts ensuring total security whenever you close the door. No more worries about having left the door open.

With the new Multiblindo Easy anxiety disappears and tranquillity is the only feeling that leaves your house with you.

TOTAL SECURITY.

AUTOMATIC LOCKING.

RELIABLE SECURITY.



EASY LEAVING

ISEO®

LIVING & LEAVING

Multiblindo Easy



ISEO recommends this application for residential use (flats, private houses, etc.)

TOTAL “0”

Switch the function selector of Multiblindo Easy on “0” to set the total and **AUTOMATIC LOCKING** of latchbolt and deadbolts.

The full security status is triggered as soon as the door is closing thus **avoiding any mistakes or carelessness.**



LIVING & LEAVING

Multiblindo Easy



LIGHT “1”

PARTIAL LOCKING (by latchbolt only) is in operation when the selector is switched on “1”.

Multiblindo Easy may operate in this function also with an electric striker: **the door only opens from inside** (a fixed knob or a pull handle will be applied outside).



ISEO recommends this application for business, public or service activities (i.e.: jeweller's, legal offices, laboratories, etc.)



LIVING & LEAVING

Multiblindo Easy

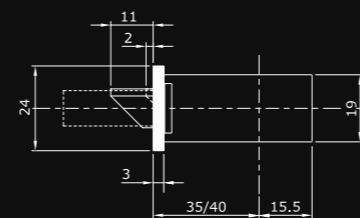
FREE

“2”

To avoid any type of locking switch the selector on “2”.

The door is “wide open” and to keep it ajar you need to fix a door closer. Obviously, the door will stay “free” only until the selector is switched back to one of the other two functions.

ISEO recommends this application for “free entrance” business activities (i.e.: shopping malls, showrooms, etc.)

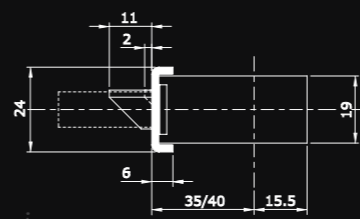


- Lock flat faceplate 24X3X2300
- 7A3210352.D** Backset 35 mm - Right
- 7A3210402.D** Backset 40 mm - Right
- 7A3210352.S** Backset 35 mm - Left
- 7A3210402.S** Backset 40 mm - Left

- Striking plates
- 033200** Flat faceplate 24x3 - Right
- 033201** Flat faceplate 24x3 - Left

- Electric strikers
- 033210** Flat faceplate 24x3 - Right
- 033211** Flat faceplate 24x3 - Left

- Striking plates for bolts 24x3
- 033165** for hook bolts (h 1860)
- 033169** for hook bolts



- Lock “U” faceplate 24x6x1860
- 7A3201352.D** Backset 35 mm - Right
- 7A3201402.D** Backset 40 mm - Right
- 7A3201352.S** Backset 35 mm - Left
- 7A3201402.S** Backset 40 mm - Left

- Striking plates
- 033202** “U” faceplate 24x6 - Right
- 033203** “U” faceplate 24x6 - Left

- Electric strikers
- 033212** “U” faceplate 24x6 - Right
- 033213** “U” faceplate 24x6 - Left

- Striking plates for bolts 24x6
- 033167** for hook bolts (h 1860)
- 033171** for hook bolts

TECHNICAL FEATURES

Multiblindo Easy has at least the same breaking resistance as the present Multiblindo. The case is made of steel and is entirely closed to avoid metal shavings from falling in. The rotating deadbolt is protected by anti-cut carbonitrided steel plates. Multiblindo Easy is completely interchangeable with the classic Multiblindo.

FUNCTIONS

LOCKING

The outstanding feature of Multiblindo Easy is the automatic locking of the latchbolt and deadbolts, which comes into operation when the door is pulled close to the door jamb. The end user may change the operating mode by switching the selector placed on the lock faceplate.

A special patented device allows the deadbolts to come out of the cases only when the latchbolt goes into the striking plate for at least 3 mm. The latchbolt aligns perfectly the wing to the door jamb; this operation ensures the best conditions for the free movement of the deadbolts.

OUTSIDE OPENING

The deadbolts are unlocked with a single turn of key in the opening direction; the latchbolt is unlocked with a further ¼ turn.

INSIDE OPENING

The deadbolts are unlocked with a single turn of key in the opening direction; the latchbolt is unlocked with a further ¼ turn. Latchbolt and deadbolts are unlocked with a 45° lever rotation.

LEVER BLOCK

The lever operation inside is blocked with a single turn of key in the closing direction. The operation is restored with single turn of key in the opposite direction. To avoid incorrect or accidental use, the lever block operation is only allowed when the deadbolts are completely locked.

This also ensures that:

- deadbolts automatic locking is fully completed
- deadbolts connecting rod has been blocked (an attack on one of the deadbolts does not damage the others).

As far as **security** is concerned, the lever block prevents the opening from inside if required, or from outside in the event of a door breaking (i.e. glass frame doors). In terms of **safety** it ensures a better exit control.

Backsets	mm 35, 40
Distance	mm 92
Flat faceplate	mm 24 x 3 x 2300
“U” faceplate	mm 24 x 6 x 1860
Lever follower	mm 8
Latchbolt max. protrusion	mm 11
Latchbolt min. protrusion	mm 2

